

HDPE FLAP VALVES ROUND OR RECTANGULAR FLAPS



WESTATLANTIC Tech Corp.

www.westatlantictech.com / www.pipelinecoupling.com

sales@westatlantictech.com 902 455 4455

HDPE Flap Valves primary application is for surface water drainage associated with rivers, estuaries and sea water outfalls to prevent reverse flow conditions. HDPE valves can be mounted on effluent outfalls for sewage treatment plants to prevent flood damage within the works.

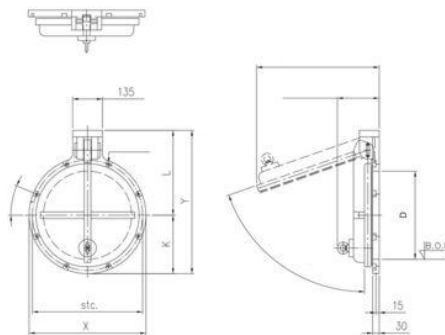
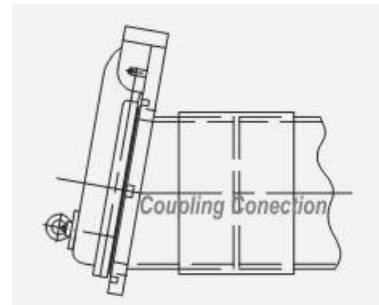
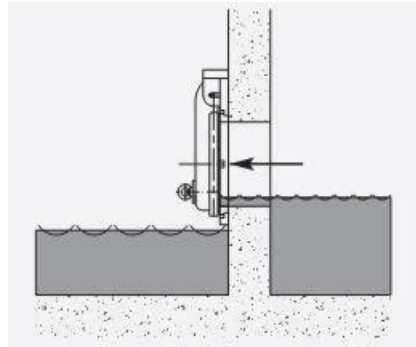
HDPE Flap Valves are designed for flood water reverse flow events when water levels rise above the flap.

HDPE is a light weight material making it excellent for mounting and accessible in restricted chambers and headwalls. HDPE flap valves respond to the slightest changes in pressure.

For flood or tidal conditions 5 meter /16 ft. water column coverings are standard valve design. For extreme flood condition planning, higher water column pressures are available.

From 4 inch to 80 inch valves (100 mm to 2000 mm) or larger diameters are available.

For sizing and availability contact us sales@westatlantictech.com also visit our web site.



902 455 4455

HDPE Flap Valves - high no-leak back standards
No Rust and and restricted hinge movement
No open leak through duckbill valve leaks
Easy Installation in Manhole chambers
Light weight